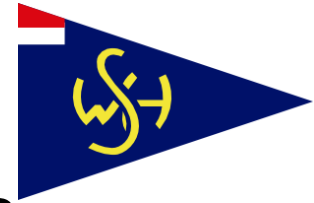




Optimist Event Heeg

30-31 March 2019



Sailing Instructions

The Organizing Authority is the Optimist Club Netherlands in cooperation with WaterSportvereniging Heeg (WSH).

The notation '[DP]' in a rule in the Sailing Instructions means that the penalty for a breach of that rule may, at the discretion of the protest committee, be less than disqualification

1 RULES

1.1 The regatta will be governed by the rules as defined in *The Racing Rules of Sailing 2017-2020*

1.2 The prescriptions of the RNYU will apply. See www.sailing.org/documents/racingrules/national_prescriptions.php

1.3 The international Class Rules apply

1.4 Sails shall carry the full sail number and national letters in accordance with the Class Rules, the RRS, and comply with RRS Appendix G. With the permission of the Race Committee a boat chartered or loaned for the event may carry a sail number in contravention of her class rules, provided that this number shall not be the sail number of any other boat competing in the same class. This changes RRS G3.

1.5 If there is a conflict between languages the English text will take precedence.

1.6 Every person on board who has its domicile in the Netherlands shall have the appropriate license. The licenses can be checked at registration.

1.7 Appendix T will apply

2 Notice to competitors

Notices to competitors will be posted on the official Noticeboard located at the entrance of the building near the dressing rooms.

3 Changes to Sailing Instructions

Any change to the sailing instructions will be posted before 0900 on the day it will take effect, except that any change to the schedule of races will be posted by 2000 on the day before it will take effect.

4 Signals made ashore

4.1 Signals made ashore will be displayed at the flagpole in front of the clubhouse.

4.2 When flag AP is displayed ashore, '1 minute' is replaced with 'not less than 30 minutes' in the race signal AP.

4.3 Boats shall not to leave the harbour until Flag D is displayed with one soundsignal. (DP)

5 Schedule of races

5.1 Race schedule

Date	Number of races	Warning signal time 1 st race of the day
Saturday 30 th March	4	10.55 Red group Asap Yellow group
Sunday 31 st March	4	10.55 Red group Asap Yellow group

5.2 The warning signal of the first race on each day will be 10.55 hours. The warning signals of the following races will be as soon as possible after the finish of the previous race.

5.3 To alert boats that a race or a sequence of races will begin soon, the orange starting line flag will be displayed with one sound signal at least 5 minutes before a warning signal is given.

5.4 On Sunday 31st of March no warning signal will be made after 15.00 hours.

6 Class flags

6.1 The class flags will be a yellow flag for the yellow fleet and a red flag for the red fleet.

6.2 Not later than Saturday morning, 30th March, 09.30 hours, the group assignment will be shown at the official notice board.

7 Racing area

Attachment A shows the location of the racing area

8 The courses

8.1 Attachment B shows the course diagram

8.2 The race committee may change the leg of a course without giving a signal. The mark must be at place before the first boat of the group starts that leg.
This changes rule 33.

9 Marks

9.1 Mark 1, 2, 3 and 4 will be yellow cylindrical buoys with the letters A, B, C and D on it.

9.2 A replacement mark will be a yellow cylindrical buoy with the letter E or F on it.

9.3 The starting and finishing marks will be orange flags, placed on a pole on a committee vessel.

10 Obstructions

The channel fairway that has to be crossed to reach the racing area, shall be an obstacle during racing as stated in RRS 19.
The channel fairway is marked by red and green marks.

11 The start

11.1 Races will be started by using RRS 26 with the warning signal made 5 minutes before the starting signal.

11.2 The starting line will be between staffs displaying orange flags on committee vessels.

11.3 An inner limit mark (ILM) may be used at the starting vessel.

11.4 A boat shall not sail in between the committee vessel and the ILM **(DP)**

11.5 Boats whose warning signal has not been made shall avoid the starting area during the starting sequence for other races.**(DP)**

11.6 A boat that does not start within 4 minutes after her starting signal will be scored DNS without a hearing. This changes RRS A4 and A5

12 Change of the next leg of the course

To change the next leg of the course, the race committee will move the original mark (or the finishing line) to a new position. No signals will be given.

This changes RRS 33

13 The finish

The finishing line will be an orange flag on a pole on a committee vessel on port side and an orange flag on a pole on a committee vessel on starboard side.

14 Penalty system

Appendix P will apply

15 Time limits and target times

15.1

Time limit	Mark 1 time limit	Target time
75 minutes	30 minutes	50 minutes

If no boat has passed Mark 1 within the Mark 1 time limit the race will be abandoned. Failure to meet the target time will not be grounds for a redress.

This changes RRS 62.1 (a)

15.2 Boats failing to finish within 15 minutes after the first boat sails the course and finishes will be scored Did Not Finish without a hearing.

This changes RRS 35, A4 and A5

16 Protest and Request for Redress

16.1 Protest forms are available at the race office, located at the regatta center of WSH. Protests and requests for redress or reopening shall be delivered there within the appropriate time limit as stated in SI 16.2

16. 2 Time limit is 60 minutes after the last boat has finished the last race of the day or the race committee signals no more racing today, whichever is later.

16.3 Appendix T applies. Every protest will be offered arbitrage if possible.

16.4 Notices will be posted no later than 30 minutes after the protest time limit to inform competitors of hearings in which they are parties or named as witness. Hearings will be held in the protest room located at the regatta center.

16.5 Notices of protests by the race committee or protest committee will be posted to inform boats under RRS 61.1 (b)

16.6 A list of boats that, under SI 14.3 have been penalized for breaking RRS 42 will be posted.

16.7 Breaches of SI's 11.3, 18 will not be grounds for a protest by a boat. This changes RRS 60.1(a)

16.8 On Sunday March 31st a request for redress based on a protest committee decision shall be delivered no later than 30 minutes after the decision was posted. This changes RRS 62.2

17 Scoring

17.1 The scoring system is as written in appendix A

17.2 2 races are required to be completed to constitute a series

17.3 (a) When fewer than 5 races have been completed, a boat's series score will be the total of her race scores.


(b) When from 5 to 8 races have been completed, a boat's series score will be the total of her race scores excluding her worst score.

18 Safety regulations

18.1 A boat that retires from a race shall notify the race committee as soon as possible (**DP**)

18.2 Competitors shall cross the channel fairway no further away than 50 meters from the Marshall committee boat. If the Marshall boat shows a red flag, the competitor shall not cross the channel fairway and keep clear from the channel. (**DP**)

18.3 While racing, competitors are not allowed to go into the channel fairway or to cross it. The channel is seen as an obstruction, stated in RRS 19 (**DP**)

18.3 If the Committee's starting vessel signals flag V, all supporting boats are required to assist to rescue and are allowed to go into the racing area. 

19 Spare

20 Spare

21 Official boats

Official boats will be marked as follows:

21.1 Race committee boats will have a white flag with the letters RC

21.2 Jury Boats will have a yellow flag with the letter J in black.

21.3 Marshall boat for crossing the channel will have an orange flag.

21.4 Rescue boats will have a purple flag with a white optimist sign.

22 Support boats

Team leaders, coaches and other support persons shall stay outside areas where boats are racing from the time of the preparatory signal for the start until all boats have finished or retired or the race committee signals a postponement, general recall or abandonment. **(DPI)**

23 Trash disposal

Trash may be placed aboard support or official boats

24 Radio Communication

Except in an emergency, a boat that is racing shall not make voice or data transmissions and shall not receive voice or data communication that is not available to all boats **(DPI)**

25 Prizes

25.1 Prizes will be given as follows

- Prizes for the first 10 sailors in the overall scoring.
- 3 Prizes will be given to the first 3 sailors in the Benjamin scoring list.

25.2 Benjamins sailors are sailors born in 2008 or later.

25.3 Price giving will be as soon as possible after the last races on Sunday 31st March.

26 Disclaimer of liability

Competitors participate in the regatta entirely at their own risk. See RRS4, decision to race. The organizing authority will not accept any liability for damage or personal injury or death sustained in conjunction with or prior to, during, or after the regatta.

27 Insurance

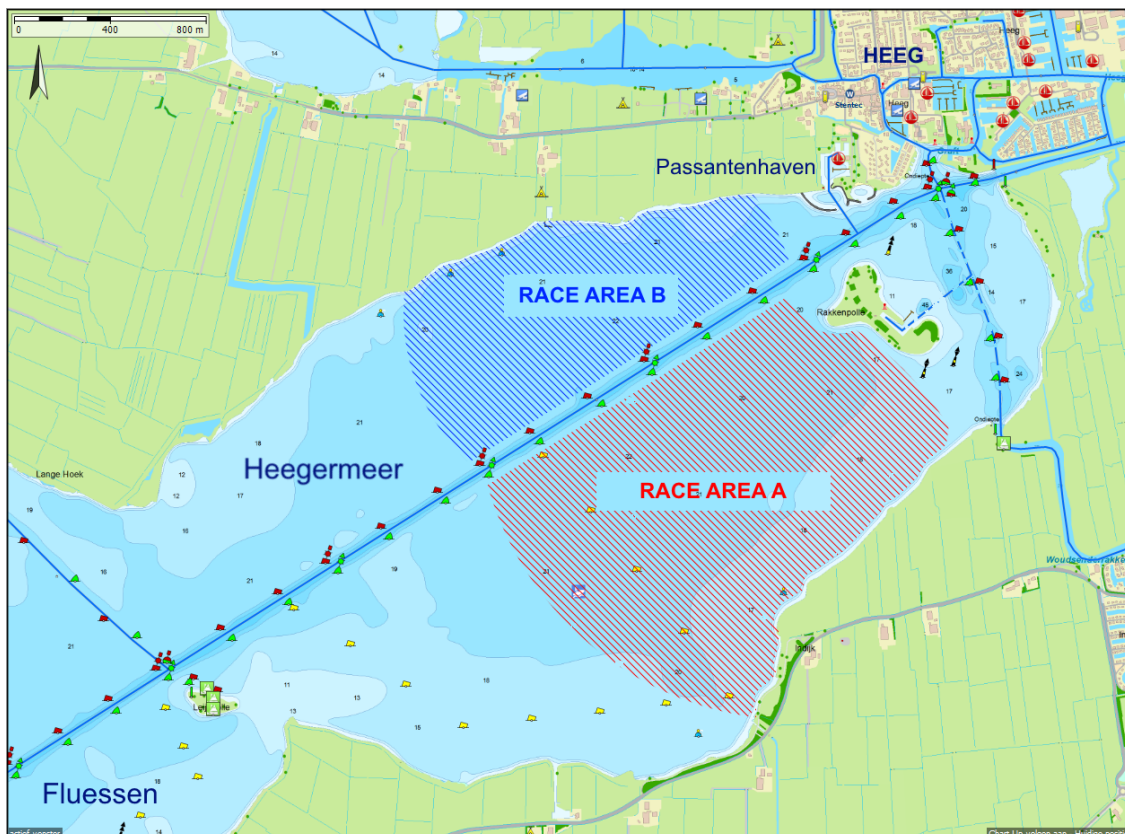
Each participating boat shall be insured with a valid third-party liability insurance with a minimum cover of € 1.000.000 per incident, or the equivalent.

Attachment A Racing Area

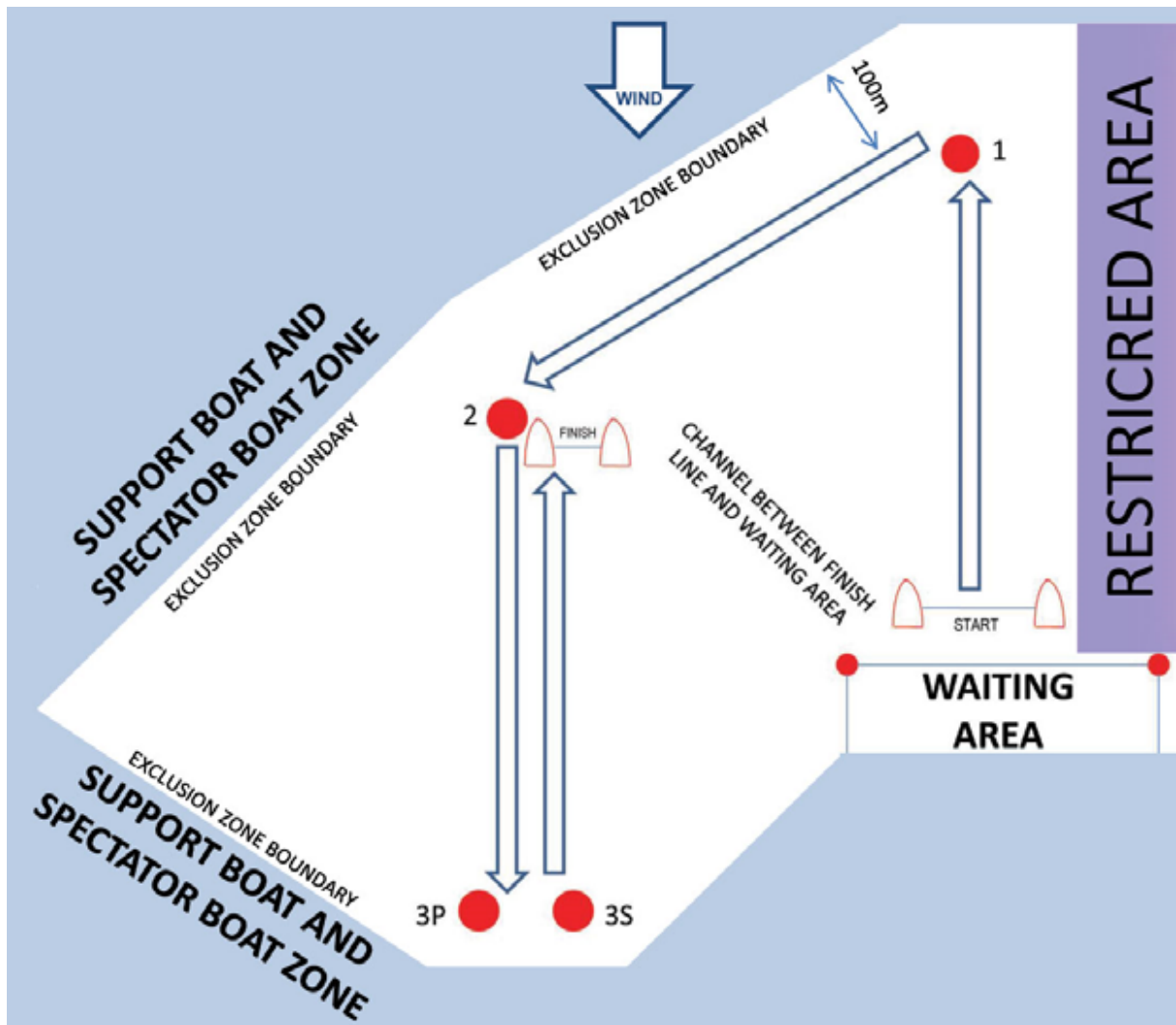
The races will be held in race area A

A. RACE AREAS

- A.1. Main race area A is located SE of the buoyed channel in the Heegermeer as indicated in the map below. Race area A is the principle race area.
- A.2. Secondary race area B is located NW of the buoyed channel in the Heegermeer as indicated in the map below.
- A.3. Competitors should not enter the buoyed channel during racing. The buoyed channel, the area designated by the line formed by the bouys at either side of the channel, is to be regarded as an obstruction as in the definitions of the RRS.
- A.4. Competitors should follow instructions of coach, rescue and committee boats when approaching the buoyed channel and are not allowed to pass the channel without permission and shall cross the channel within 50 meters of the Marshall boat.
- A.5. If the Marshall boat is showing a red flag, competitors are not allowed to cross the channel and shall keep clear of the channel.



Attachment B The course



Attachment C

Extra information

- On Saturday 30th and Sunday 31st of March a coach meeting will be held at the regatta centre at 9.15.
- On Saturday 30th of March the competitors can get a warm snack at the regatta centre, immediately after the races.
- At the regatta centre the competitors can get some fresh fruit offered by our sponsor Smeding groente en fruit.



SMEDIJNG
Groenten en Fruit

